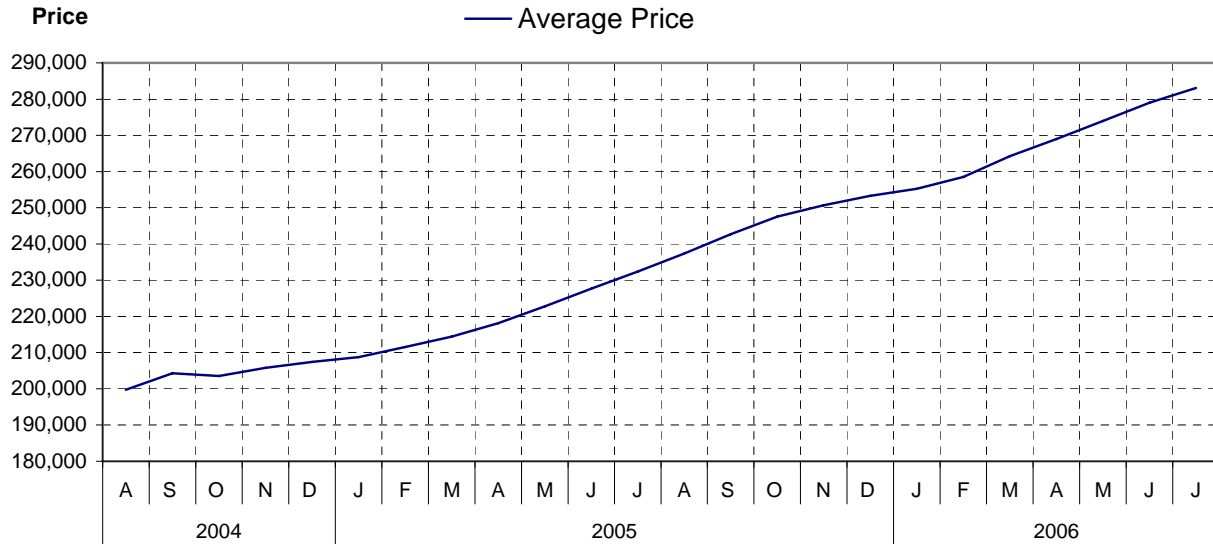


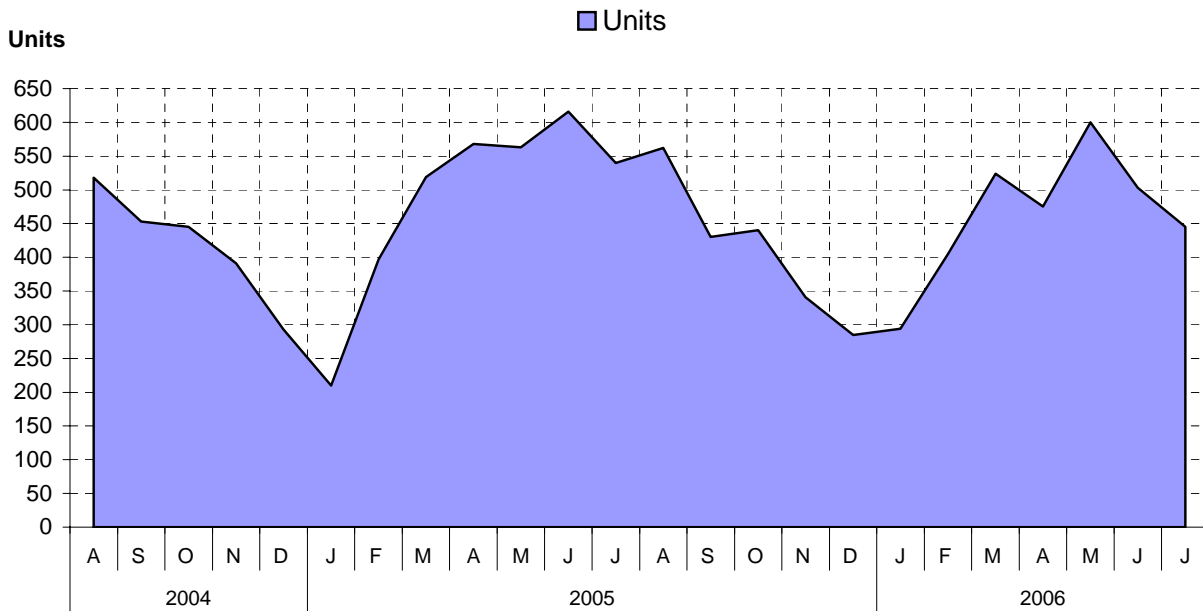
Board Area as at July 31, 2006

Cumulative Residential Average Single Family Sale Price



NOTE: Figures are based on a "rolling total" from the past 12 months – i.e. 12 months to date instead of the calendar "year to date".

Single Family Units Reported Sold



Comparative Activity by Property Type

(Reported Sales – Unconditional Sales Only)

	-----CURRENT MONTH-----			-----12 MONTHS TO DATE-----		
	THIS YEAR	LAST YEAR	% Change	THIS YEAR	LAST YEAR	% Change
LOTS						
UNITS LISTED	96	87	10 %	1,630	1,434	13 %
UNITS REPORTED SOLD	81	116	30-%	886	914	3-%
SELL/LIST RATIO	84 %	133 %		54 %	63 %	
REPORTED SALES DOLLARS	9,819,626	11,680,480	15-%	109,955,008	90,109,517	22 %
AVG SELL PRICE/UNIT	121,229	100,693	20 %	124,102	98,588	25 %
PRICE RATIO	97 %	97 %		98 %	96 %	
DAYS TO SELL	49	67	26-%	74	94	21-%
ACTIVE LISTINGS	603	482	25 %			

SINGLE FAMILY

UNITS LISTED	793	726	9 %	8,190	7,359	11 %
UNITS REPORTED SOLD	445	540	17-%	5,303	5,513	3-%
SELL/LIST RATIO	56 %	74 %		64 %	74 %	
REPORTED SALES DOLLARS	135,497,100	140,577,391	3-%	1,500,971,944	1,280,984,829	17 %
AVG SELL PRICE/UNIT	304,487	260,328	16 %	283,042	232,357	21 %
PRICE RATIO	98 %	98 %		98 %	98 %	
DAYS TO SELL	50	46	8 %	49	50	2-%
ACTIVE LISTINGS	2,160	1,629	32 %			

CONDOMINIUM (APT)

UNITS LISTED	144	98	46 %	1,528	1,372	11 %
UNITS REPORTED SOLD	60	90	33-%	1,066	982	8 %
SELL/LIST RATIO	41 %	91 %		69 %	71 %	
REPORTED SALES DOLLARS	11,885,650	15,325,838	22-%	173,743,140	132,899,545	30 %
AVG SELL PRICE/UNIT	198,094	170,287	16 %	162,986	135,335	20 %
PRICE RATIO	98 %	99 %		98 %	98 %	
DAYS TO SELL	66	58	13 %	56	58	3-%
ACTIVE LISTINGS	542	407	33 %			

CONDOMINIUM (TWNHSE)

UNITS LISTED	96	55	74 %	979	722	35 %
UNITS REPORTED SOLD	60	52	15 %	622	588	5 %
SELL/LIST RATIO	62 %	94 %		63 %	81 %	
REPORTED SALES DOLLARS	13,833,731	8,293,591	66 %	119,913,254	91,742,725	30 %
AVG SELL PRICE/UNIT	230,562	159,492	44 %	192,786	156,025	23 %
PRICE RATIO	98 %	98 %		98 %	98 %	
DAYS TO SELL	45	48	6-%	48	57	15-%
ACTIVE LISTINGS	282	161	75 %			

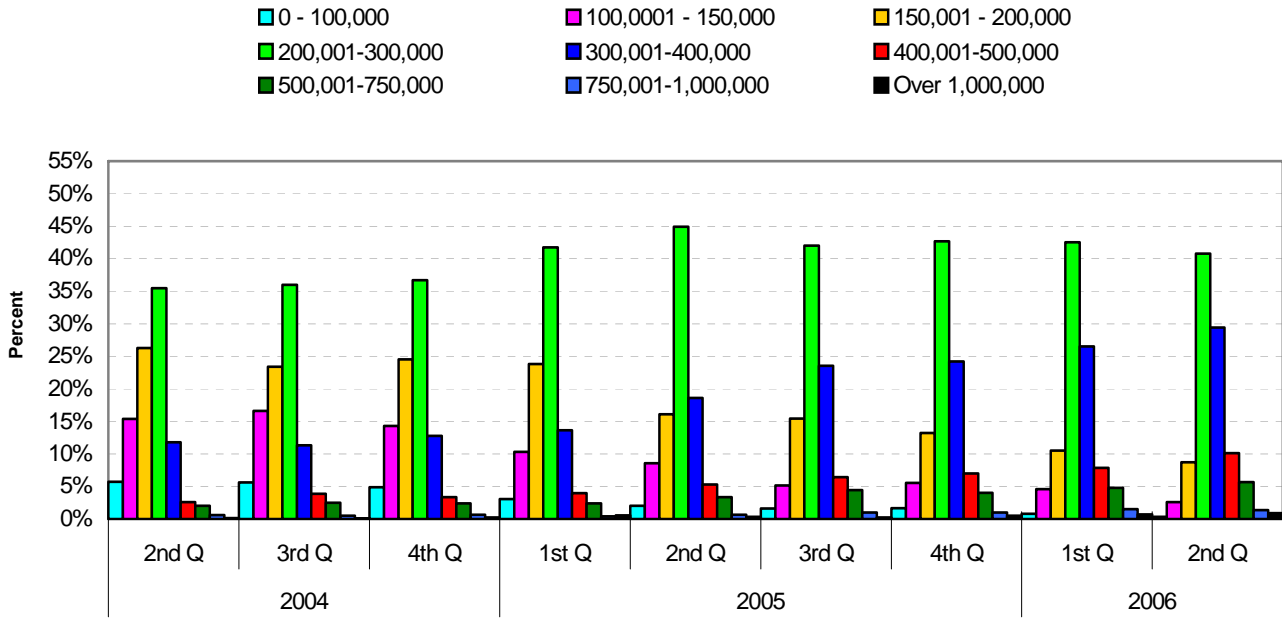
PLEASE NOTE:

SINGLE FAMILY property does NOT INCLUDE acreage with house, condominiums, duplex/triplex, mobile homes, single family waterfront or single family strata.

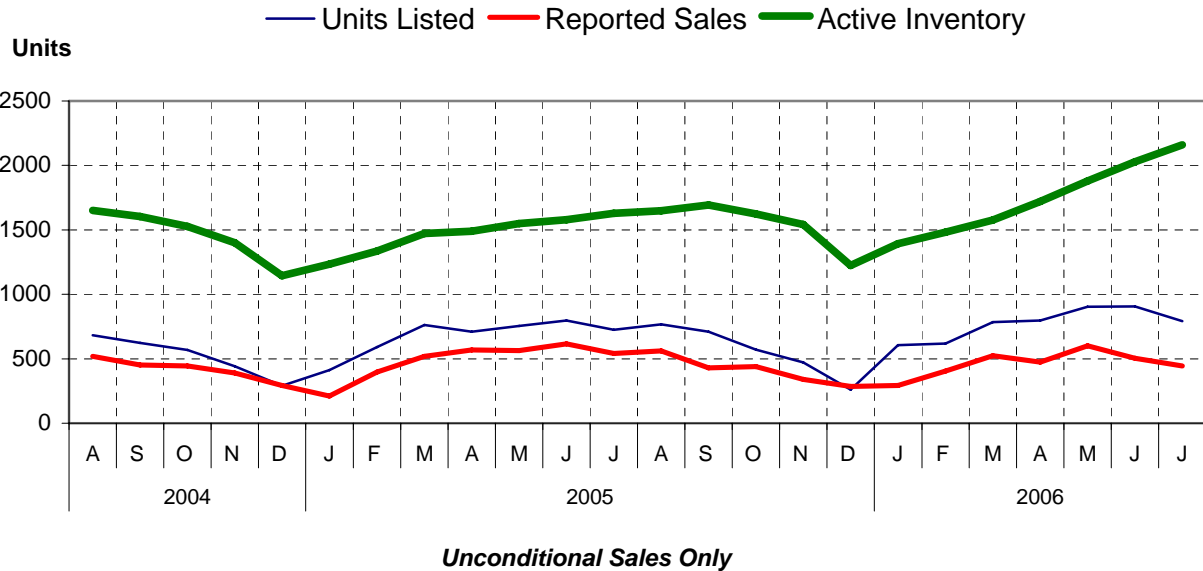
LOTS do NOT INCLUDE acreage or waterfront acreage.

COLLAPSE RATE – The collapse rate for all properties within the Board area was 1.6% for the current month.

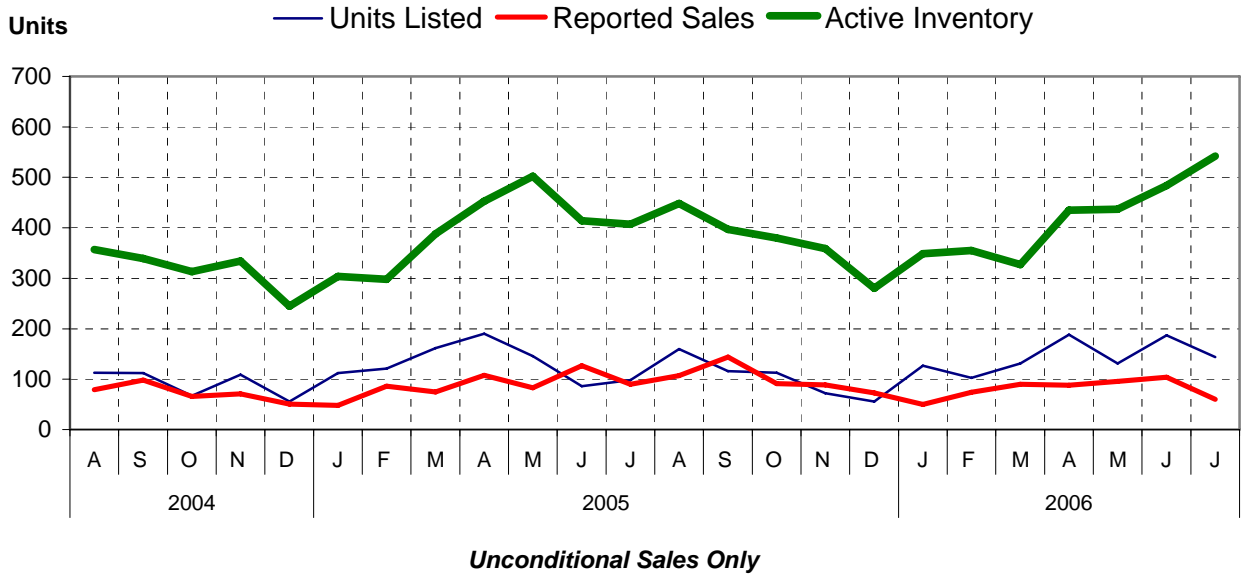
Percentage of Market Share by Price Range Board Area



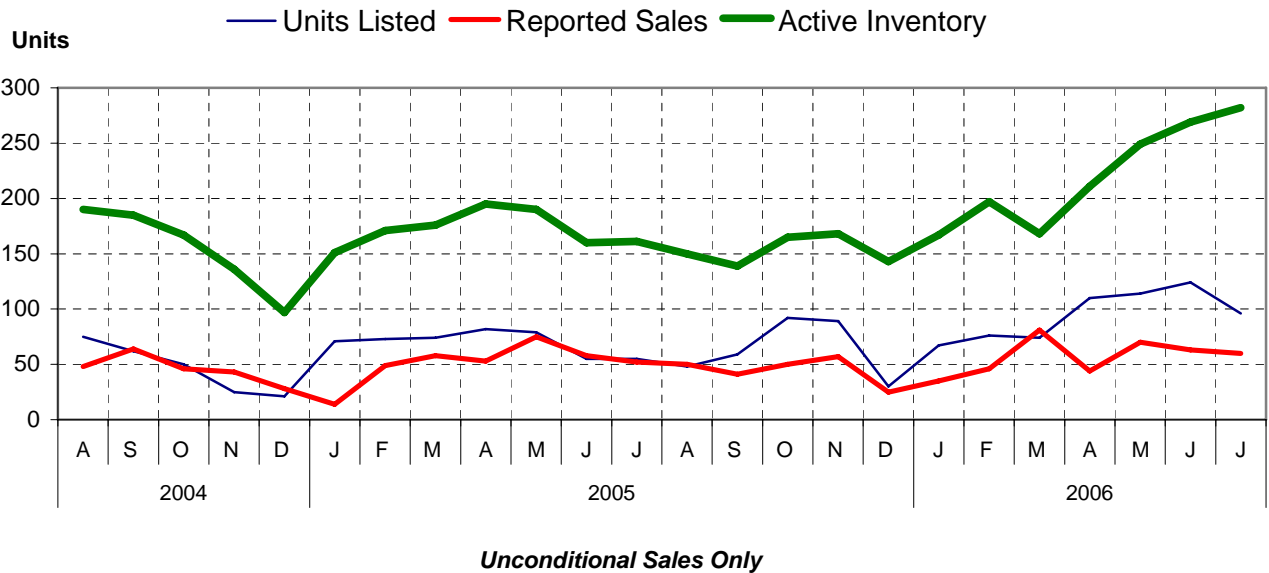
Single Family Comparisons between



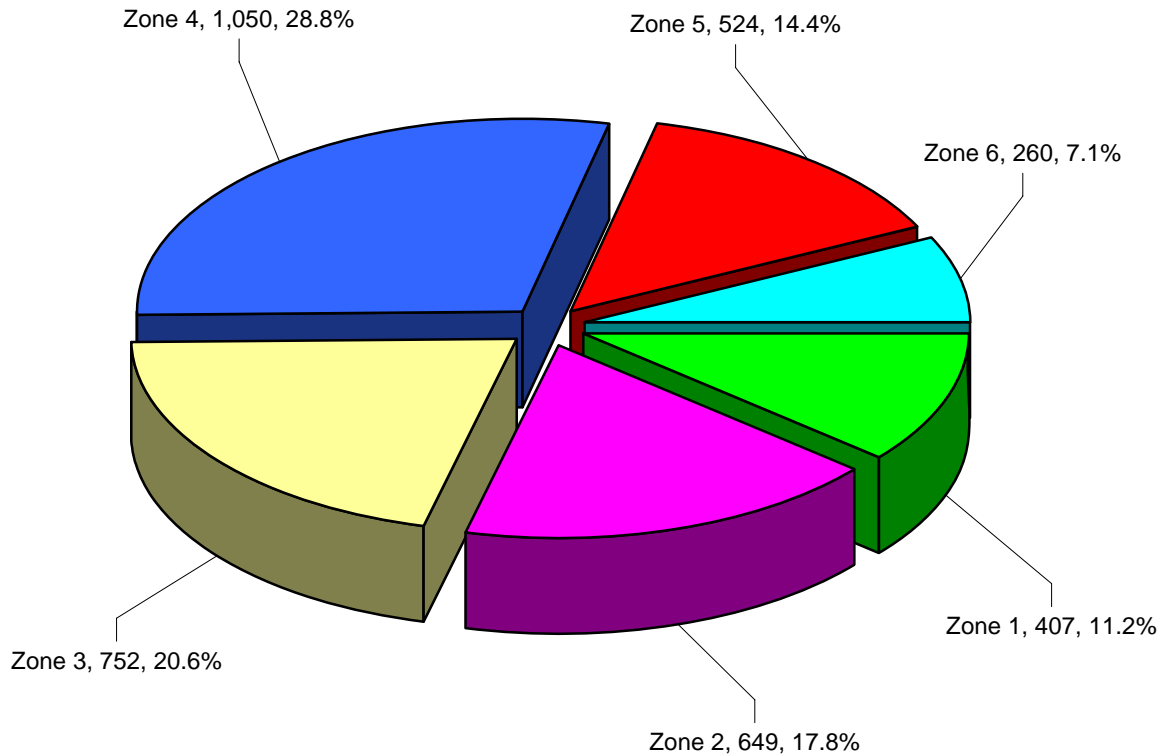
Condominium (Apartment) Comparisons between



Condominium (Townhouse) Comparisons between



MLS® Single Family Sales Analysis For Board Area – by Zone



Total Unconditional Sales January 1 to July 31, 2006 = 3,642

Zone 1 – Campbell River
Zone 2 – Comox Valley
Zone 3 – Cowichan Valley
Zone 4 – Nanaimo
Zone 5 – Parksville/Qualicum
Zone 6 – Port Alberni/West Coast