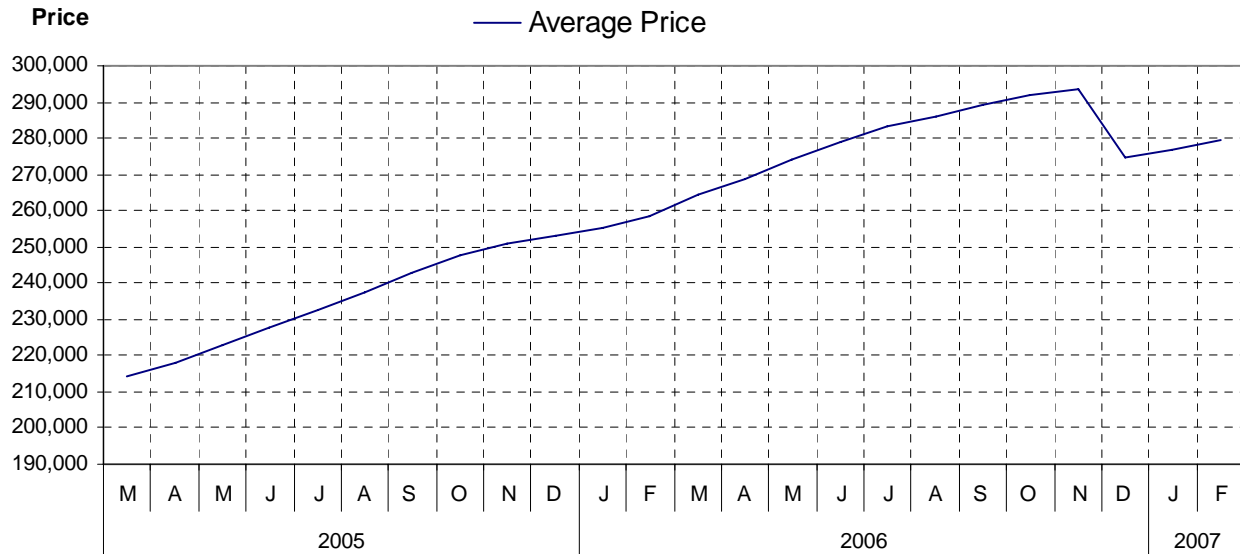


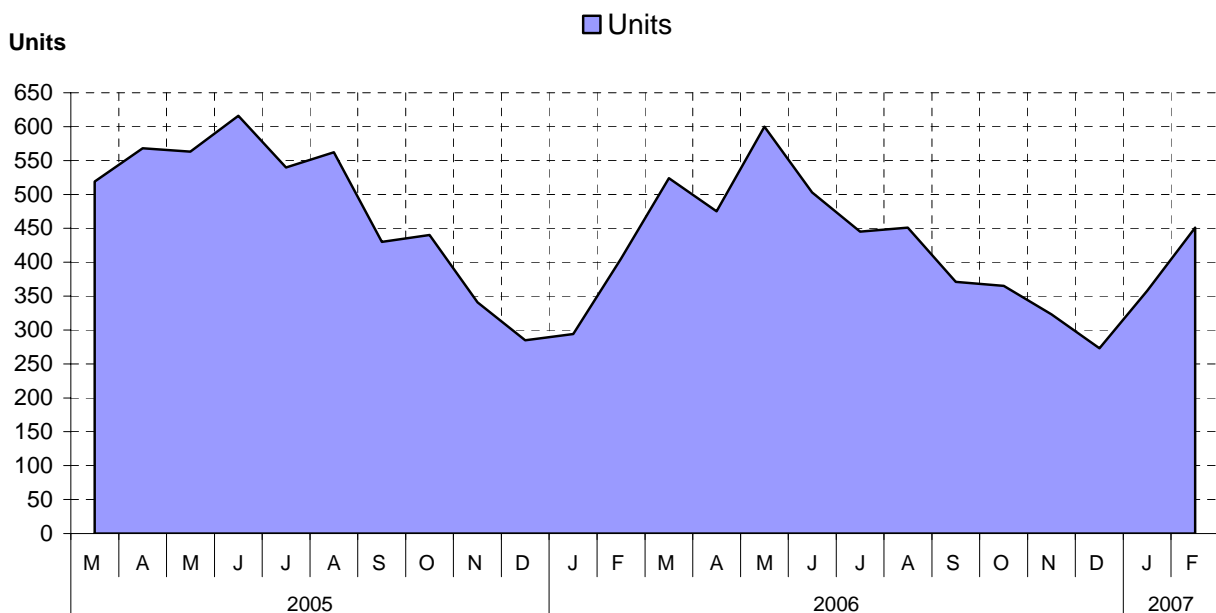
Board Area as at February 28, 2007

Cumulative Residential Average Single Family Sale Price



NOTE: Figures are based on a "rolling total" from the past 12 months – i.e. 12 months to date instead of the calendar "year to date".

Single Family Units Reported Sold



Comparative Activity by Property Type

(Reported Sales – Unconditional Sales Only)

| | -----CURRENT MONTH----- | | | -----12 MONTHS TO DATE----- | | |
|------------------------|-------------------------|------------|----------|-----------------------------|-------------|----------|
| | THIS YEAR | LAST YEAR | % Change | THIS YEAR | LAST YEAR | % Change |
| LOTS | | | | | | |
| UNITS LISTED | 168 | 163 | 3 % | 1,897 | 1,645 | 15 % |
| UNITS REPORTED SOLD | 78 | 81 | 3-% | 801 | 999 | 19-% |
| SELL/LIST RATIO | 46 % | 49 % | | 42 % | 60 % | |
| REPORTED SALES DOLLARS | 12,837,675 | 10,035,864 | 27 % | 108,615,630 | 113,036,930 | 3-% |
| AVG SELL PRICE/UNIT | 164,585 | 123,899 | 32 % | 135,600 | 113,150 | 19 % |
| PRICE RATIO | 98 % | 98 % | | 97 % | 97 % | |
| DAYS TO SELL | 84 | 73 | 15 % | 70 | 84 | 16-% |
| ACTIVE LISTINGS | 889 | 489 | 81 % | | | |

SINGLE FAMILY

| | | | | | | |
|------------------------|-------------|-------------|------|---------------|---------------|------|
| UNITS LISTED | 788 | 619 | 27 % | 8,529 | 7,755 | 9 % |
| UNITS REPORTED SOLD | 451 | 452 | 0 % | 5,606 | 6,208 | 9-% |
| SELL/LIST RATIO | 57 % | 73 % | | 65 % | 80 % | |
| REPORTED SALES DOLLARS | 134,032,267 | 117,571,039 | 14 % | 1,567,510,629 | 1,492,636,717 | 5 % |
| AVG SELL PRICE/UNIT | 297,189 | 260,112 | 14 % | 279,613 | 240,437 | 16 % |
| PRICE RATIO | 98 % | 98 % | | 98 % | 98 % | |
| DAYS TO SELL | 73 | 54 | 35 % | 55 | 49 | 12 % |
| ACTIVE LISTINGS | 1,980 | 1,482 | 33 % | | | |

CONDOMINIUM (APT)

| | | | | | | |
|------------------------|------------|------------|------|-------------|-------------|------|
| UNITS LISTED | 166 | 103 | 61 % | 1,736 | 1,429 | 21 % |
| UNITS REPORTED SOLD | 79 | 74 | 6 % | 978 | 1,111 | 11-% |
| SELL/LIST RATIO | 47 % | 71 % | | 56 % | 77 % | |
| REPORTED SALES DOLLARS | 14,503,888 | 10,975,727 | 32 % | 190,153,529 | 159,844,286 | 18 % |
| AVG SELL PRICE/UNIT | 183,593 | 148,320 | 23 % | 194,431 | 143,874 | 35 % |
| PRICE RATIO | 97 % | 98 % | | 98 % | 99 % | |
| DAYS TO SELL | 91 | 67 | 35 % | 64 | 56 | 14 % |
| ACTIVE LISTINGS | 624 | 355 | 75 % | | | |

CONDOMINIUM (TWNHSE)

| | | | | | | |
|------------------------|------------|-----------|------|-------------|-------------|------|
| UNITS LISTED | 88 | 76 | 15 % | 1,124 | 806 | 39 % |
| UNITS REPORTED SOLD | 64 | 46 | 39 % | 676 | 600 | 12 % |
| SELL/LIST RATIO | 72 % | 60 % | | 60 % | 74 % | |
| REPORTED SALES DOLLARS | 13,622,167 | 8,536,899 | 59 % | 146,946,596 | 101,500,347 | 44 % |
| AVG SELL PRICE/UNIT | 212,846 | 185,584 | 14 % | 217,376 | 169,167 | 28 % |
| PRICE RATIO | 97 % | 98 % | | 98 % | 98 % | |
| DAYS TO SELL | 64 | 55 | 16 % | 54 | 47 | 14 % |
| ACTIVE LISTINGS | 282 | 197 | 43 % | | | |

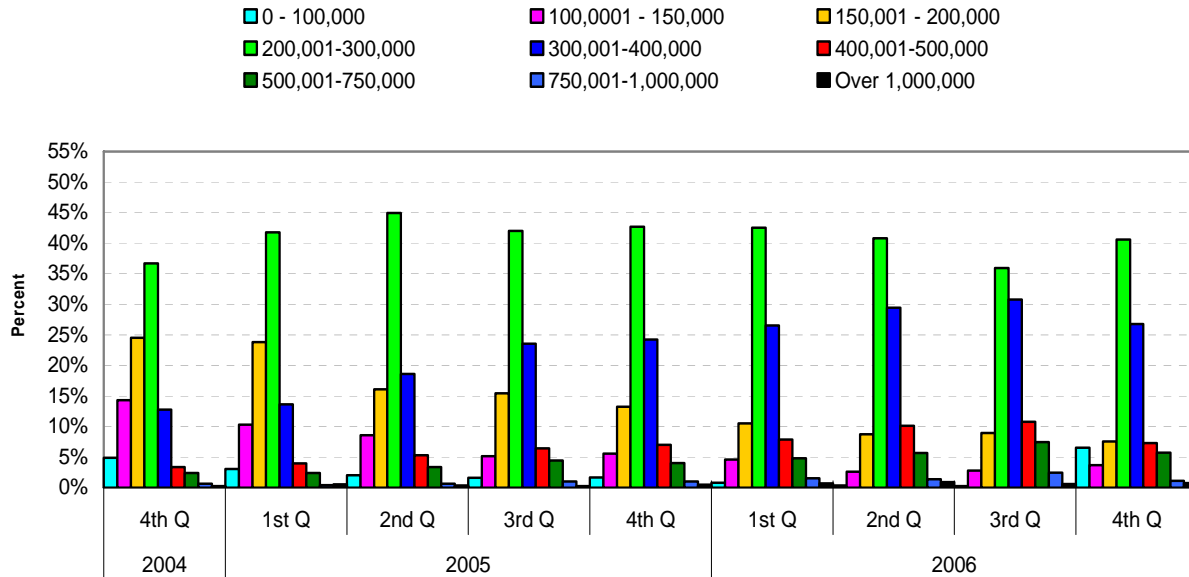
PLEASE NOTE:

SINGLE FAMILY property does NOT INCLUDE acreage with house, condominiums, duplex/triplex, mobile homes, single family waterfront or single family strata.

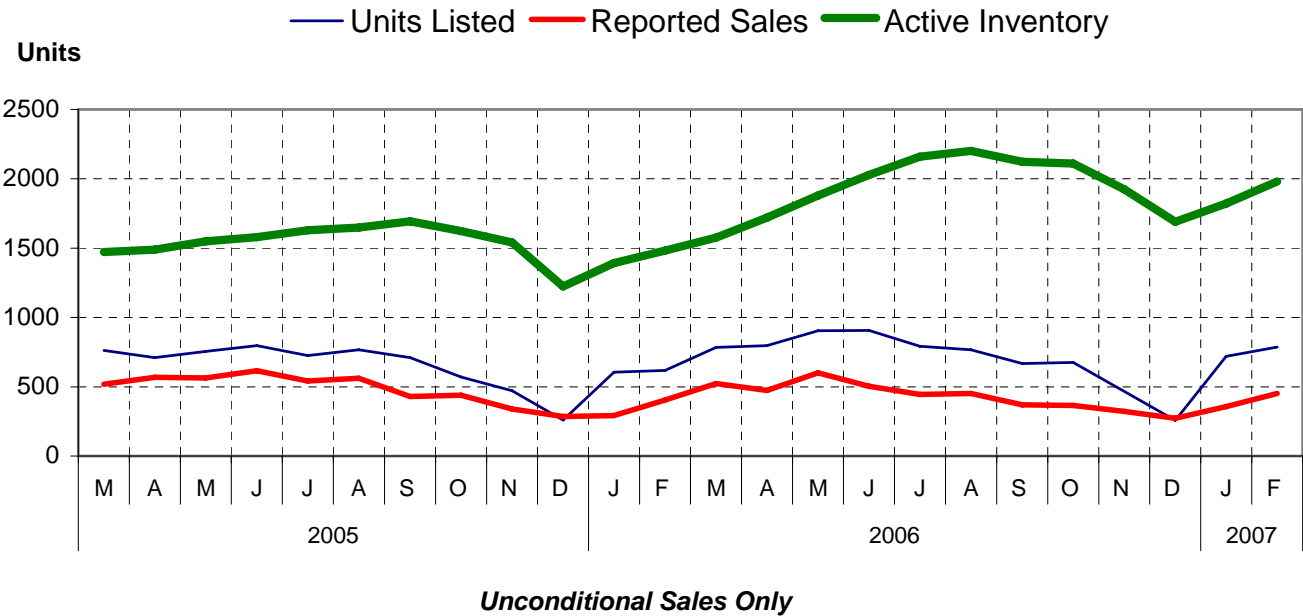
LOTS do NOT INCLUDE acreage or waterfront acreage.

COLLAPSE RATE – The collapse rate for all properties within the Board area was 0.9% for the current month.

Percentage of Market Share by Price Range Board Area

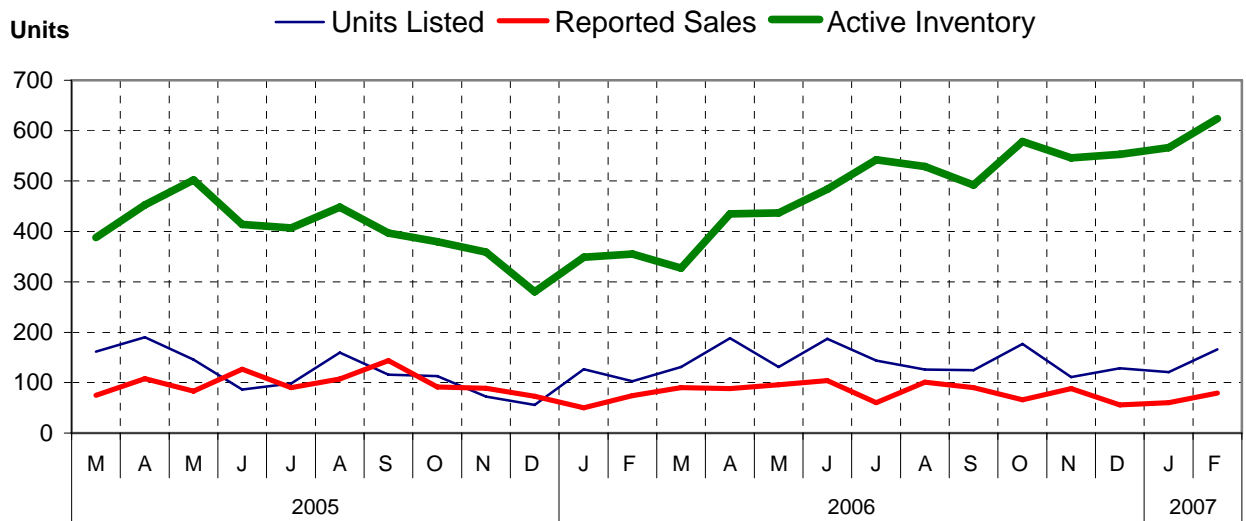


Single Family Comparisons between



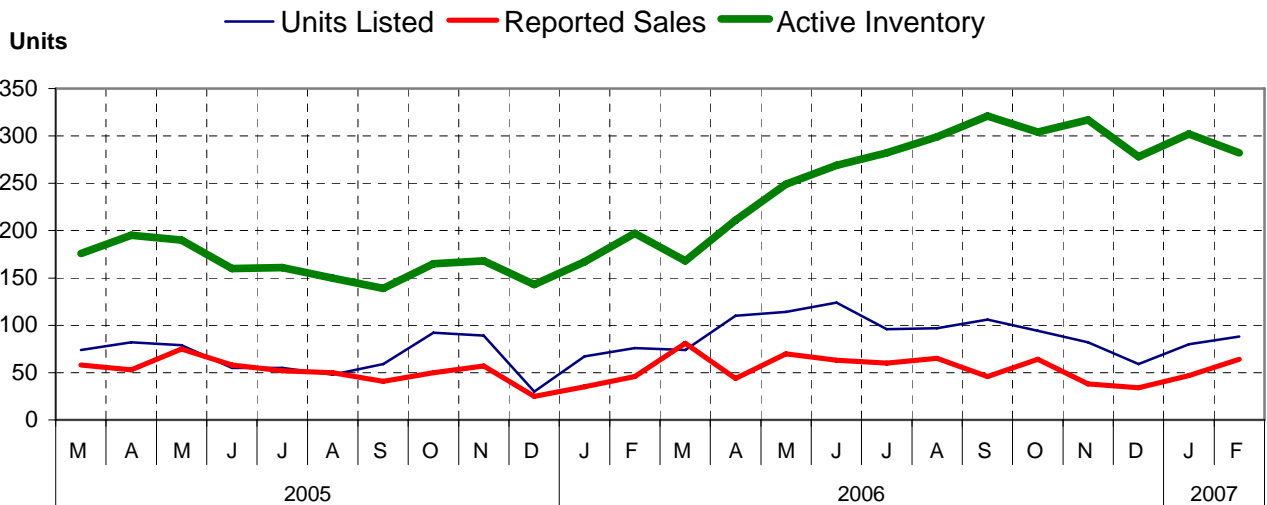
Unconditional Sales Only

Condominium (Apartment) Comparisons between



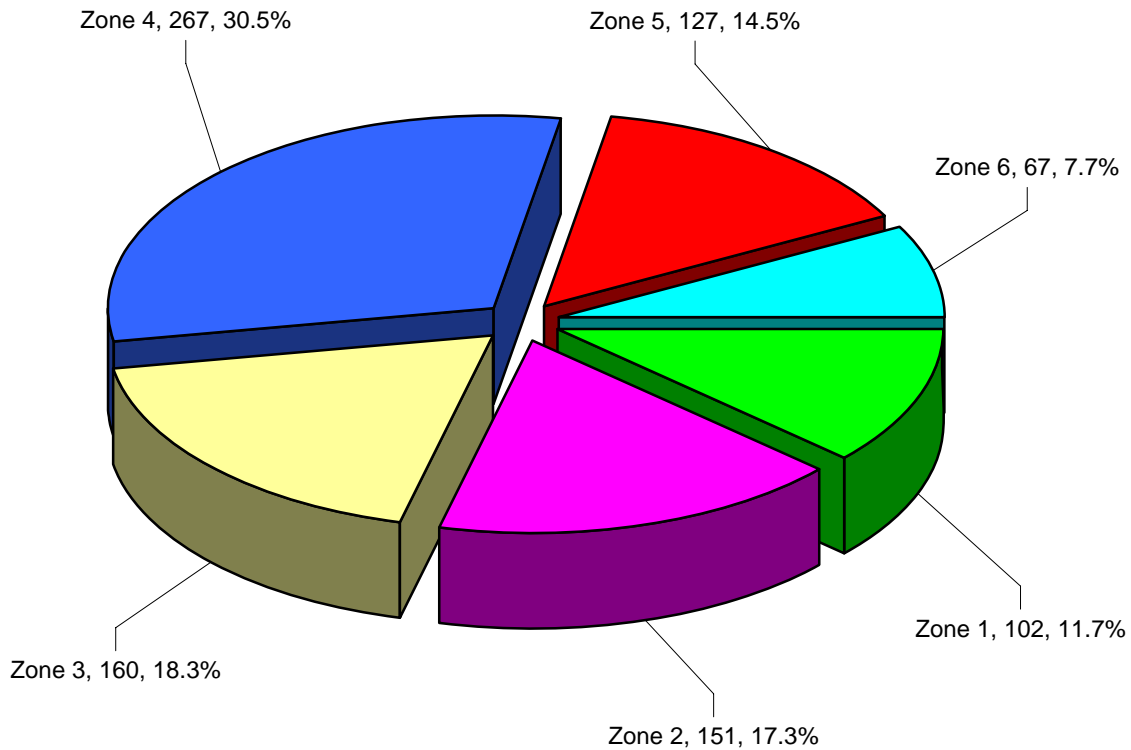
Unconditional Sales Only

Condominium (Townhouse) Comparisons between



Unconditional Sales Only

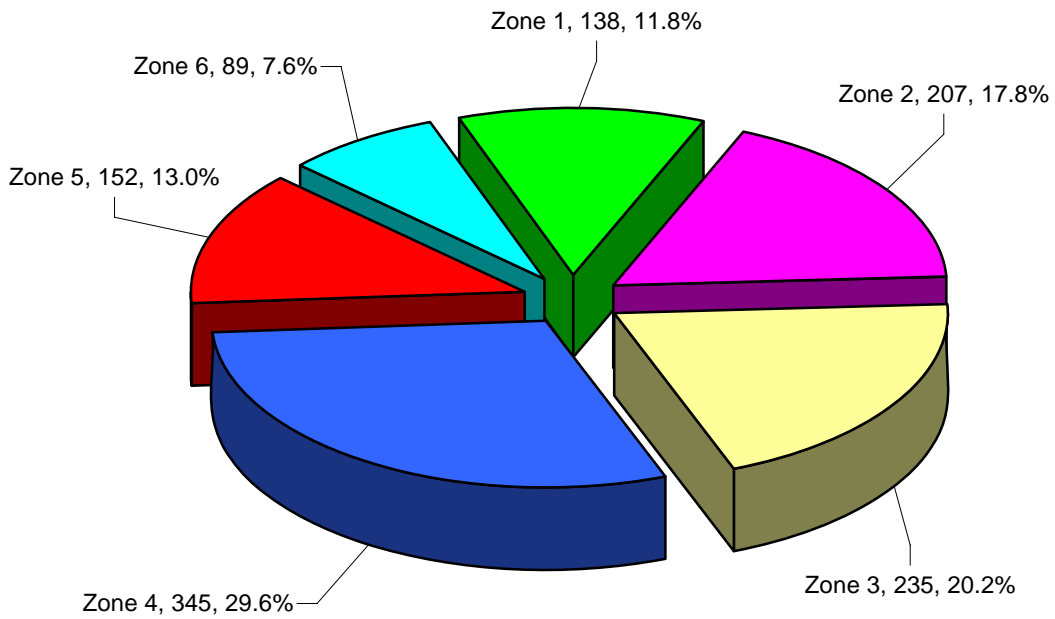
MLS® Single Family Sales Analysis For Board Area – by Zone



Total Unconditional Sales January 1 to February 28, 2007 = 874

Zone 1 – Campbell River
Zone 2 – Comox Valley
Zone 3 – Cowichan Valley
Zone 4 – Nanaimo
Zone 5 – Parksville/Qualicum
Zone 6 – Port Alberni/West Coast

4th Quarter 2006
MLS® Single Family Sales Analysis
For Board Area – By Zone



Total Unconditional Sales - 1,166
4th Quarter - October 1 to December 31, 2006

- Zone 1 – Campbell River**
- Zone 2 – Comox Valley**
- Zone 3 – Cowichan Valley**
- Zone 4 – Nanaimo**
- Zone 5 – Parksville/Qualicum**
- Zone 6 – Port Alberni/West Coast**