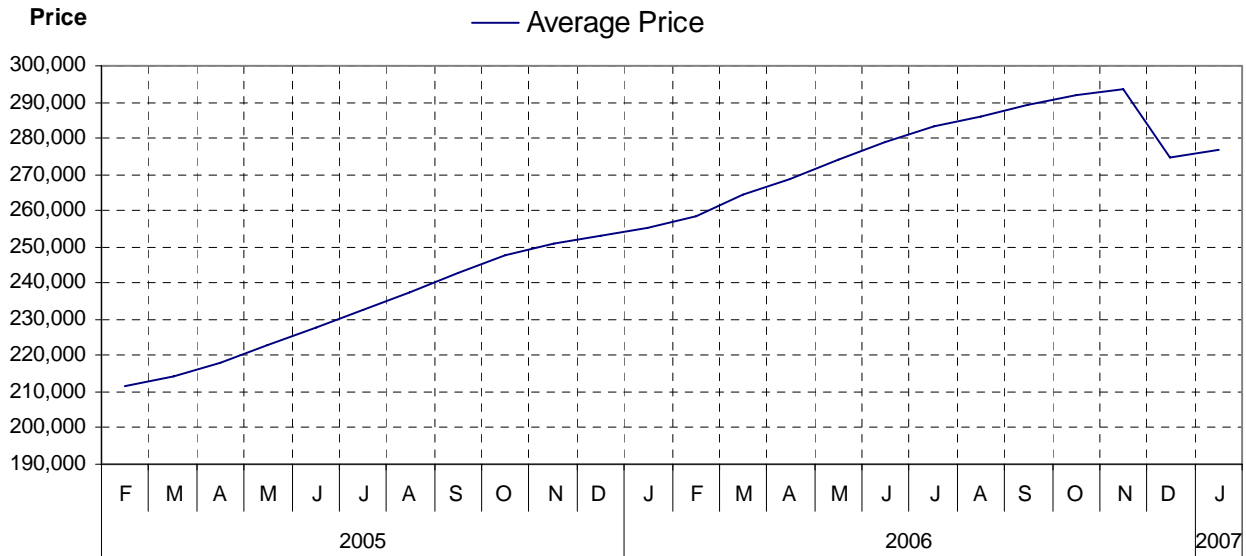


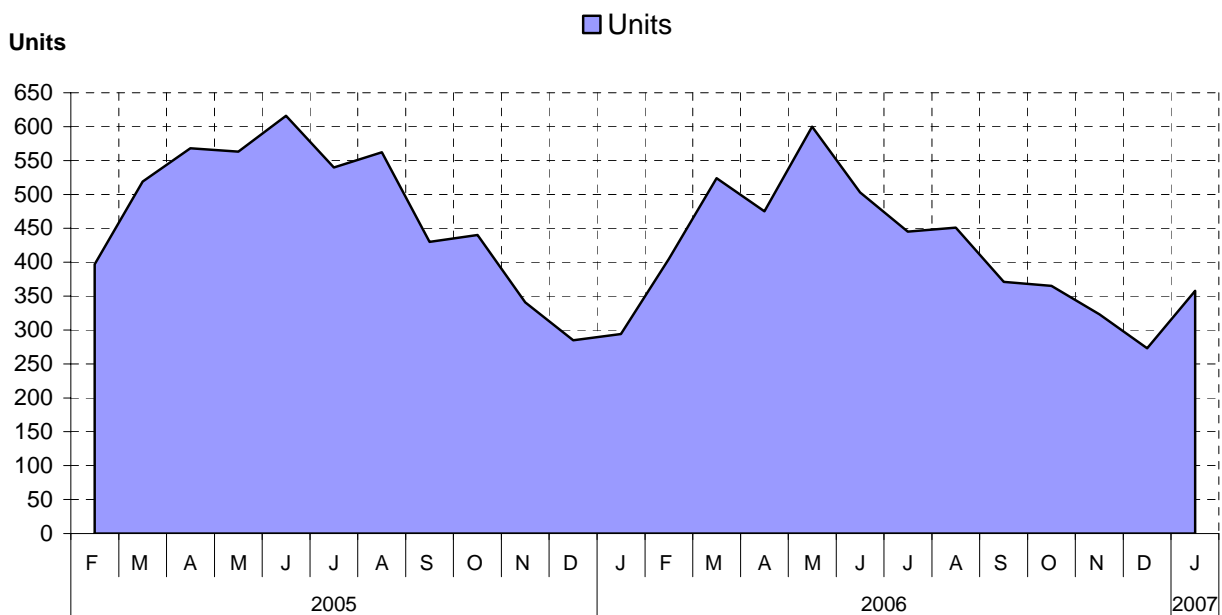
Board Area as at January 31, 2007

Cumulative Residential Average Single Family Sale Price



NOTE: Figures are based on a "rolling total" from the past 12 months – i.e. 12 months to date instead of the calendar "year to date".

Single Family Units Reported Sold



Comparative Activity by Property Type

(Reported Sales – Unconditional Sales Only)

	-----CURRENT MONTH-----			-----12 MONTHS TO DATE-----		
	THIS YEAR	LAST YEAR	% Change	THIS YEAR	LAST YEAR	% Change
LOTS						
UNITS LISTED	178	170	4 %	1,892	1,575	20 %
UNITS REPORTED SOLD	33	110	70-%	775	989	21-%
SELL/LIST RATIO	18 %	64 %		40 %	62 %	
REPORTED SALES DOLLARS	4,402,068	13,826,100	68-%	102,715,819	109,612,579	6-%
AVG SELL PRICE/UNIT	133,396	125,691	6 %	132,536	110,831	19 %
PRICE RATIO	98 %	99 %		97 %	97 %	
DAYS TO SELL	83	83	0 %	70	90	22-%
ACTIVE LISTINGS	806	455	77 %			

SINGLE FAMILY

UNITS LISTED	719	605	18 %	8,360	7,726	8 %
UNITS REPORTED SOLD	358	335	6 %	5,607	6,196	9-%
SELL/LIST RATIO	49 %	55 %		67 %	80 %	
REPORTED SALES DOLLARS	99,693,855	82,569,205	20 %	1,551,049,401	1,469,902,491	5 %
AVG SELL PRICE/UNIT	278,474	246,475	12 %	276,627	237,234	16 %
PRICE RATIO	97 %	97 %		98 %	98 %	
DAYS TO SELL	70	63	11 %	53	50	6 %
ACTIVE LISTINGS	1,822	1,393	30 %			

CONDOMINIUM (APT)

UNITS LISTED	121	127	4-%	1,673	1,447	15 %
UNITS REPORTED SOLD	60	50	20 %	973	1,123	13-%
SELL/LIST RATIO	49 %	39 %		58 %	77 %	
REPORTED SALES DOLLARS	11,383,148	7,975,057	42 %	186,709,779	160,250,039	16 %
AVG SELL PRICE/UNIT	189,719	159,501	18 %	191,890	142,698	34 %
PRICE RATIO	98 %	98 %		98 %	99 %	
DAYS TO SELL	69	72	4-%	62	56	10 %
ACTIVE LISTINGS	566	349	62 %			

CONDOMINIUM (TWNHSE)

UNITS LISTED	80	67	19 %	1,112	803	38 %
UNITS REPORTED SOLD	47	35	34 %	658	603	9 %
SELL/LIST RATIO	58 %	52 %		59 %	75 %	
REPORTED SALES DOLLARS	9,850,860	7,027,900	40 %	141,861,328	100,578,848	41 %
AVG SELL PRICE/UNIT	209,592	200,797	4 %	215,594	166,797	29 %
PRICE RATIO	98 %	98 %		98 %	98 %	
DAYS TO SELL	80	55	45 %	53	49	8 %
ACTIVE LISTINGS	302	167	80 %			

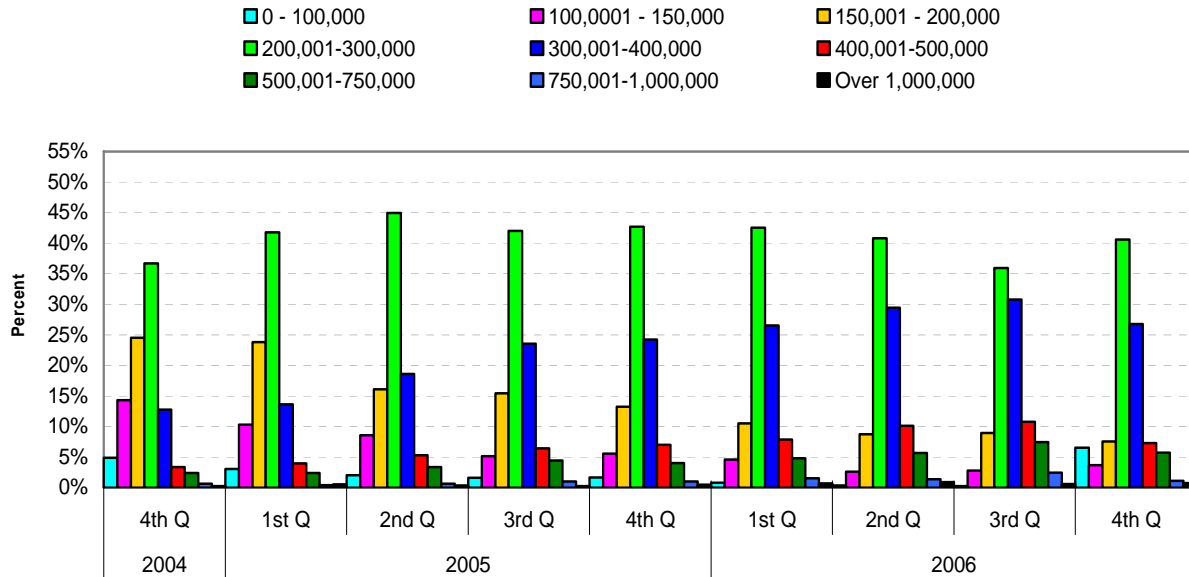
PLEASE NOTE:

SINGLE FAMILY property does NOT INCLUDE acreage with house, condominiums, duplex/triplex, mobile homes, single family waterfront or single family strata.

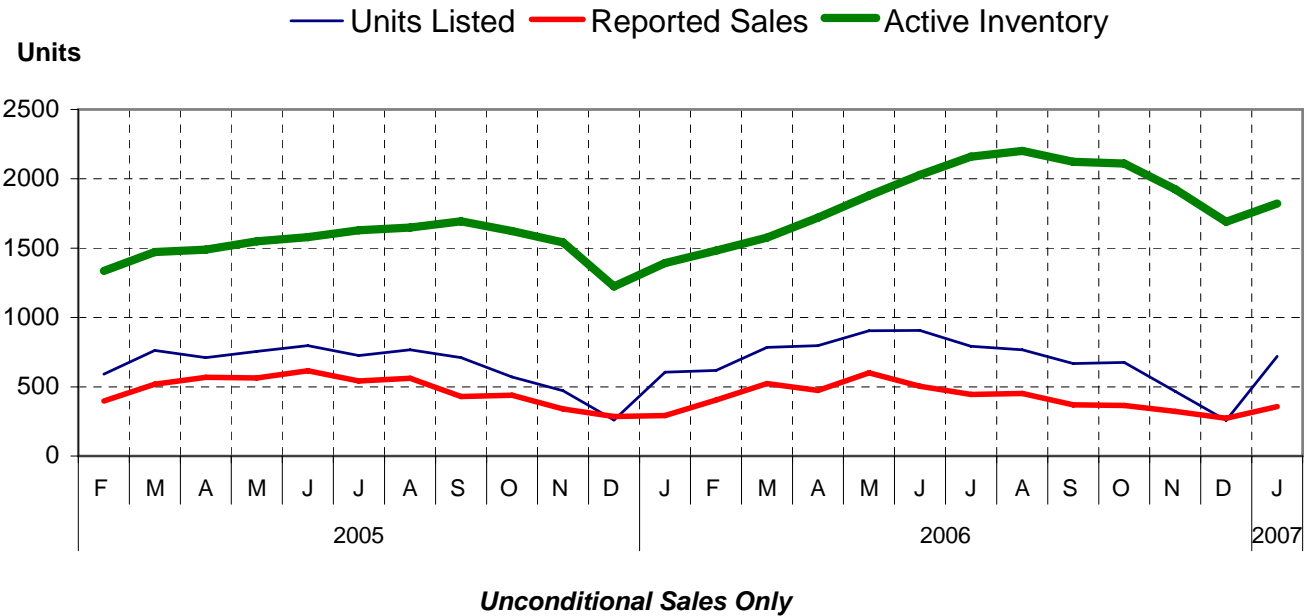
LOTS do NOT INCLUDE acreage or waterfront acreage.

COLLAPSE RATE – The collapse rate for all properties within the Board area was 0.3% for the current month.

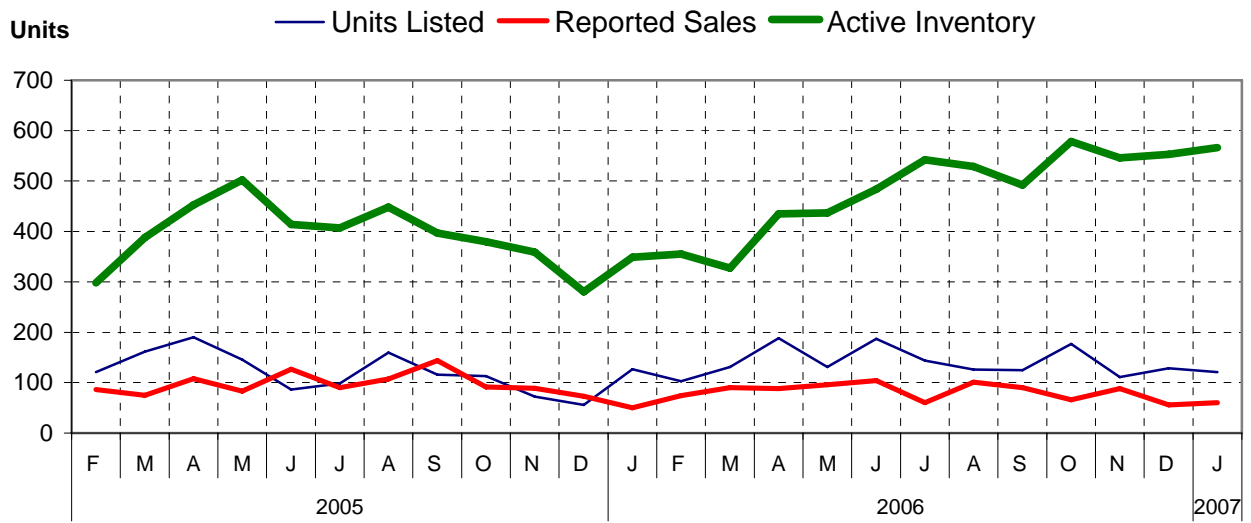
Percentage of Market Share by Price Range Board Area



Single Family Comparisons between

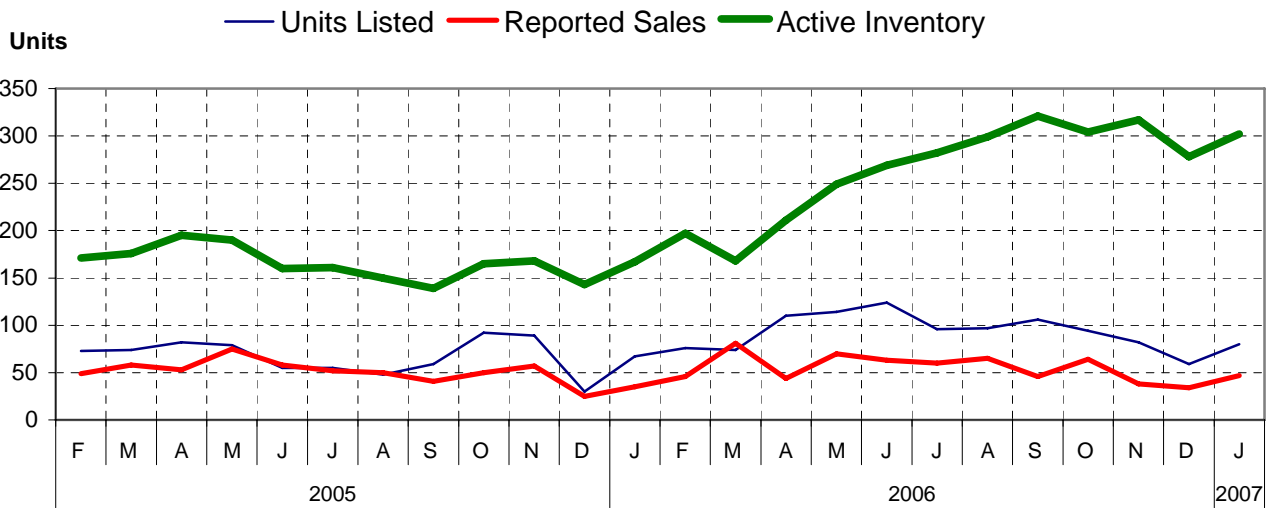


Condominium (Apartment) Comparisons between



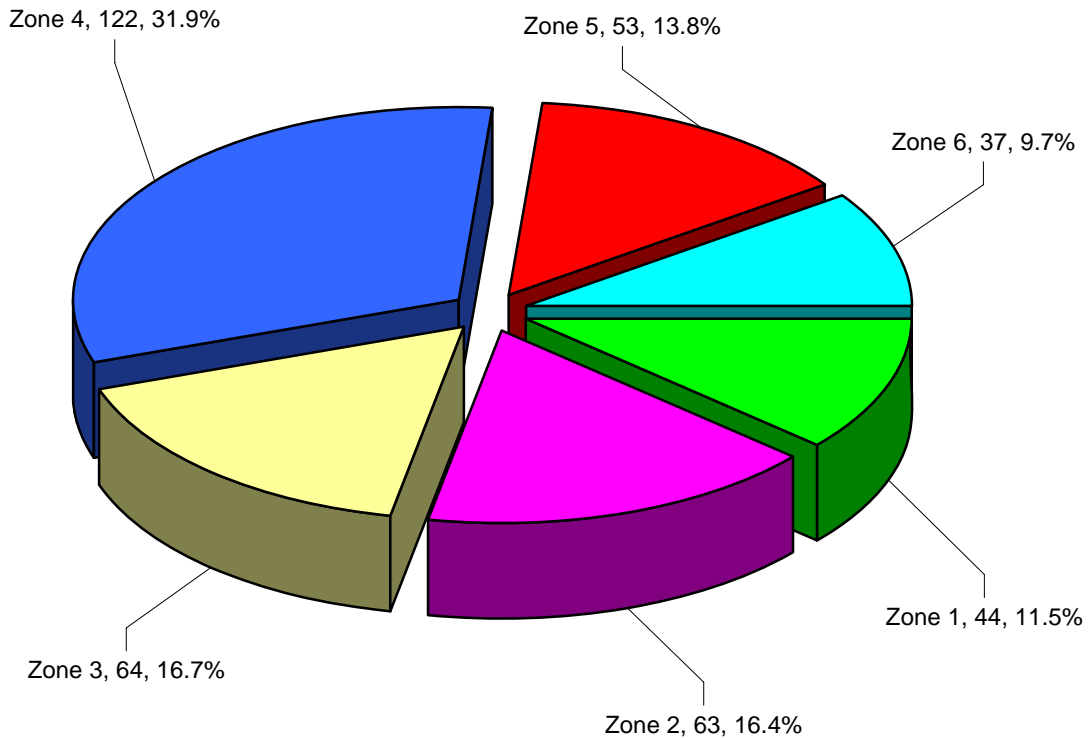
Unconditional Sales Only

Condominium (Townhouse) Comparisons between



Unconditional Sales Only

MLS® Single Family Sales Analysis For Board Area – by Zone



Total Unconditional Sales January 1 to January 31, 2007 = 383

Zone 1 – Campbell River
Zone 2 – Comox Valley
Zone 3 – Cowichan Valley
Zone 4 – Nanaimo
Zone 5 – Parksville/Qualicum
Zone 6 – Port Alberni/West Coast